



— *Annual Report 2021*



OnePierce
Community Resiliency Fund

Table of **CONTENTS**

A Year in Review: 2021	1
OnePierce Timeline	2
Our Funding Sources	3
Our Programs	4
Grants	
Community Loans	
Health Innovations Funds	
Our Impacts	5
Impacts in Numbers	
Qualitative Impacts	
Our Value	8
For Community Organizations	
For Funders	
Board of Directors	9

Dear Friends and Supporters of OnePierce,

This past year has continued to challenge our community and our healthcare providers responding to the pandemic. On an organizational level, additional federal funding for rental assistance created new financing and technical assistance needs among the agencies expanding to take on these contracts. On an individual level, the mental health crisis continued and deepened among Pierce County households and children.

OnePierce met these challenges with an expansion of its community lending program and a grant round focused on behavioral health and equity in Pierce County. Our funding supports groups like First 5 FUNdamentals to develop and launch Baby Lounges to connect Spanish-speaking parents of newborns with social support networks. It is contributing to deeper outreach in homeless encampments through the work of Brotherhood RISE Center, and it is supporting youth recovery, in partnership with local school districts, through therapy offered by Recovery Café Orting Valley.

OnePierce launched its health innovation program with a contract to improve birth outcomes in Pierce County. This will pay for BIPOC-identifying individuals to train as birth doulas and to attend local births. As part of this initiative, OnePierce is committed to the registration of doulas and the promotion of statewide policies that enable Medicaid to reimburse these critical birthing services. Through this work, OnePierce also implemented its first outcomes-based model with payments made for improved birth outcomes.

This holistic approach of funding, advocacy, and support will be the pilot for our health innovations program.

Most importantly, OnePierce has completed its work through partnerships. We are grateful to all who have supported us. In particular, Greater Tacoma Community Foundation spearheaded the guaranty agreement that aligned philanthropic funders around our bridge loans. Community members came forward with contributions to our cause. Finally, towards the end of the year, we learned that Ballmer Group committed a \$2.5M donation to OnePierce. This enabled us to keep our bridge loans interest-free for borrowers.

The next few pages share our progress and impacts in 2021. We look forward to building on our successes, learning from our experiences, and continuing to support Pierce County in 2022.

We hope you stay well and socially connected, even when physically distant.

Lauren Fulton

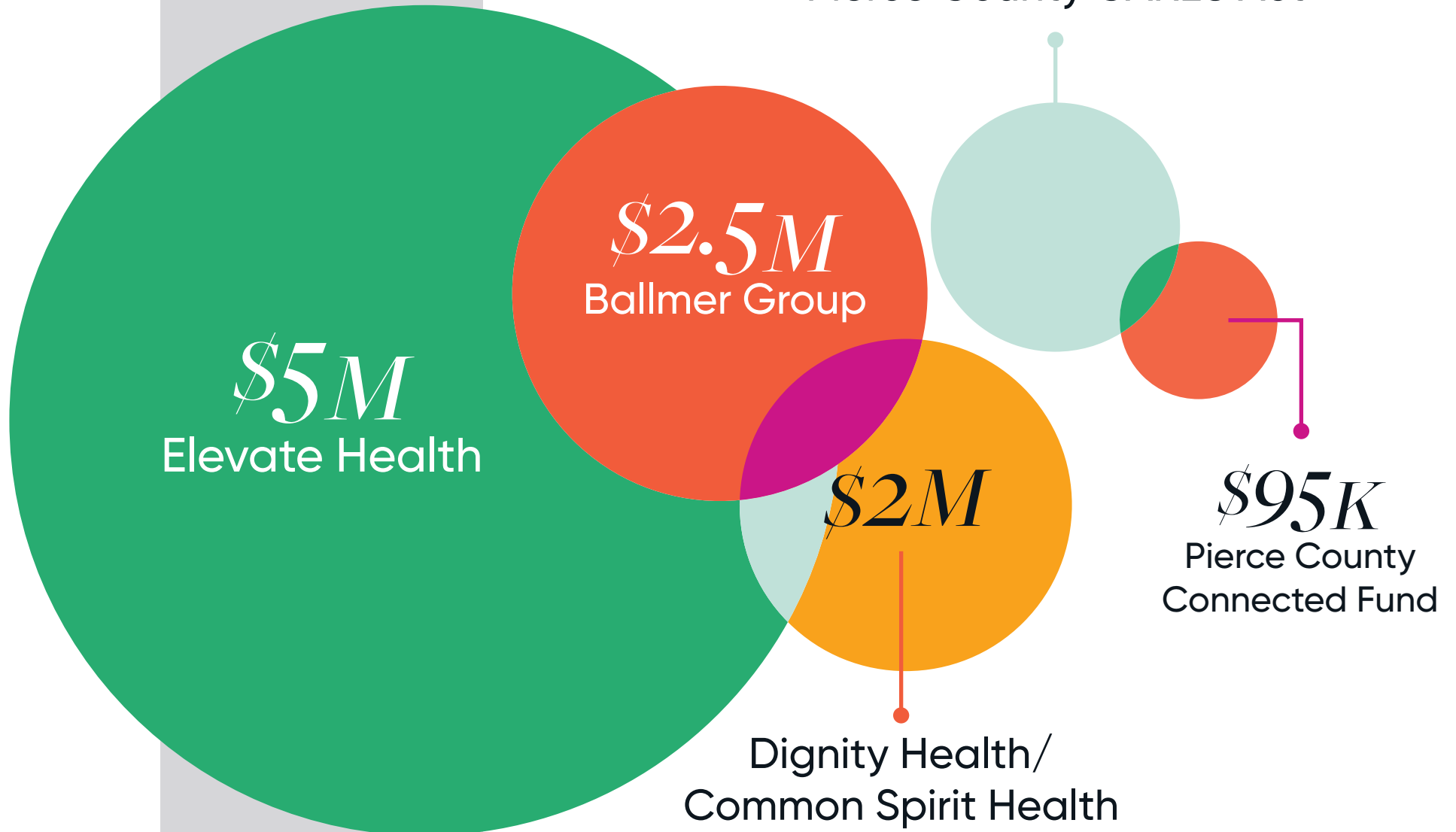
Executive Director, OnePierce

OnePierce *Timeline*

2021

- FEB** First round of bridge loans fully repaid by borrowers
- MAR** \$50K received from Pierce County Connected for COVID response work
- APR** \$2.63M disbursed in second round of bridge loans
\$2.63M guaranty agreed with philanthropic partners
- MAY** 501(c)(3) determination received from IRS
- JUNE** \$250K pre-development loan renewed for supportive housing development
- AUG** \$800K short-term project financing loan approved for affordable housing development
- SEPT** Behavioral Health Equity Challenge launched
- OCT** \$200K awarded to six Equity Challenge grantees
- DEC** \$1.2M approved in third round of bridge loans for rental assistance
\$33K approved for health innovations program launch
\$2.5M donation committed to OnePierce

Our Funding
SOURCES



Our PROGRAMS

1. Grants:

Non-repayable funding to community organizations. In 2021, \$200K in grants were disbursed through the OnePierce Behavioral Health Equity Challenge.

2. Community Loans:

Repayable funding with low or no interest. In 2021, the loan program approved \$1M in loans for the development of affordable and supportive housing. It committed \$3.8M in bridge loans for rental assistance providers.

3. Health Innovations Funds:

Creatively structured funding and support for the work of Elevate Health and partners addressing systemic challenges. The program launched in 2021 with a \$33K contract to improve birth outcomes in Pierce County through birth doula training.

OnePierce invests in any social determinants of health that improve whole-person health and health equity.

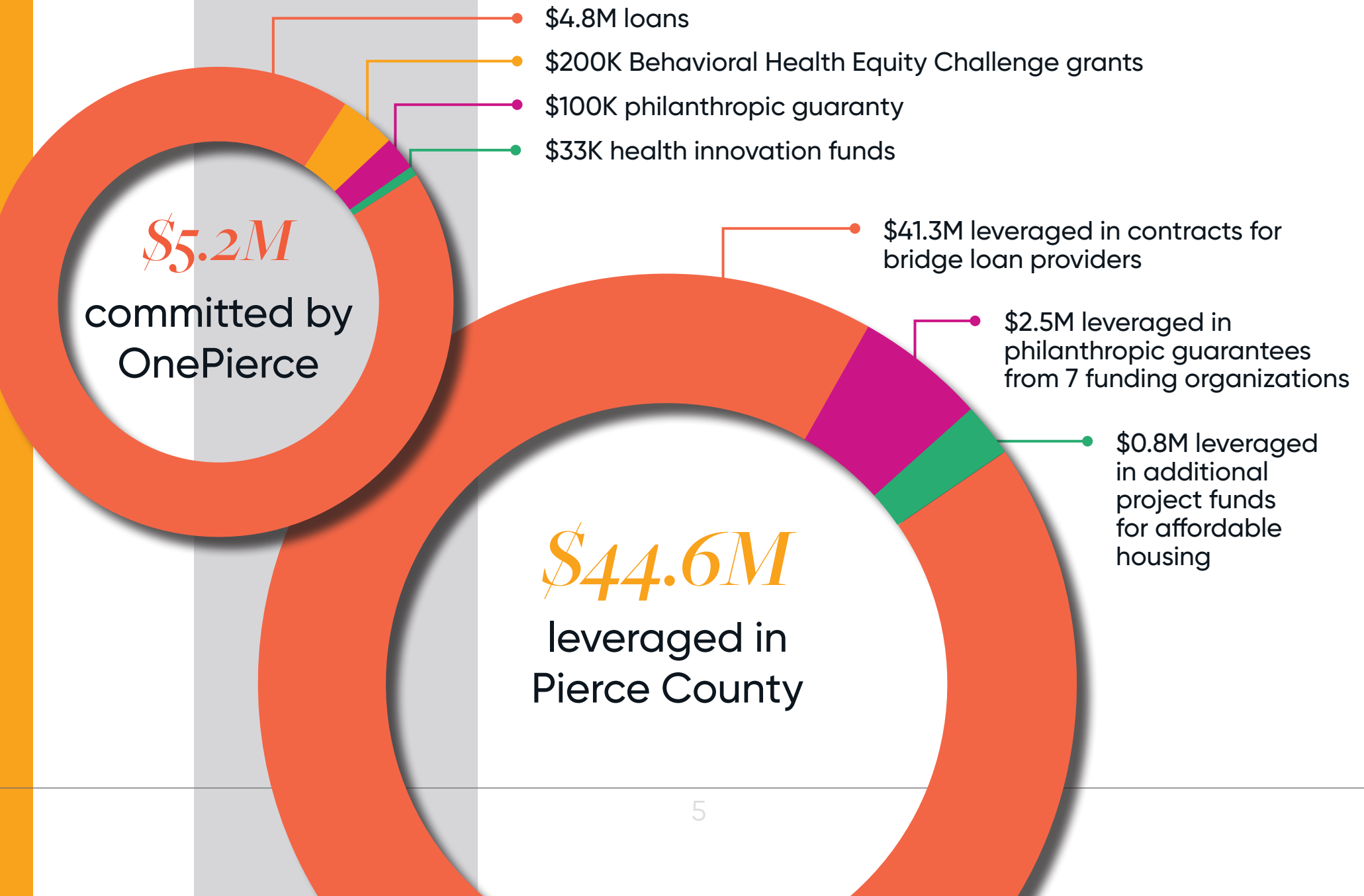
THE PRIORITIES ADOPTED FOR 2021 INCLUDE:

increased units
of affordable and
supportive housing

improved access to
behavioral health services

additional workforce
development opportunities
in underserved communities

Our IMPACTS *\$49.8M* Capital Committed and Leveraged



Impacts in Numbers:

16

New units of affordable housing
for first-time homeowners

40+

Rental units of affordable and
supportive housing planned
through loan approvals

5,457

Households assisted with
rent and utilities from
bridge loan borrowers

6

Behavioral health providers supported
to increase access to behavioral
healthcare during COVID-19



Qualitative Impacts:



Renewed partnerships with 7 philanthropic guarantors for the bridge loans supporting rental assistance providers



Advanced 'trust-based lending' with low-barrier bridge loans



Launched health innovations program to address systemic health challenges



Contracted first outcomes-based model for reduced rates of pre-term births and low birth weights



Centered community voice in grantmaking process



Our VALUE

OnePierce offers loans, grants, and innovation funds to help community organizations provide whole-person health and bridge health equity gaps in Pierce County.

For Community Organizations

OnePierce maintains products that are competitively priced and flexible to address local needs. It is a nimble funder with the ability to adapt to new circumstances, and it works in genuine partnership with its borrowers and grantees.

For Funders

OnePierce occupies a unique position in the community with its lending, grantmaking, and healthcare experience. It increases the impact of its contributions by leveraging other sources of funding, and it is guided by an engaged, multi-sector Board of Directors key to its success.

Board of DIRECTORS

Lois Bernstein

Chief Community Executive, MultiCare Health System

Pablo Bravo

System Vice President, CommonSpirit Health

Steve O'Ban

Senior Counsel for Behavioral Health, Pierce County Executive's Office

Allan Fisher

Chief Operating Officer, United HealthCare Community Plan of Washington

Alanna Hein

Interim Executive Director of Elevate Health

For more information on the mission
and vision of OnePierce, please visit:

OnePierce.org